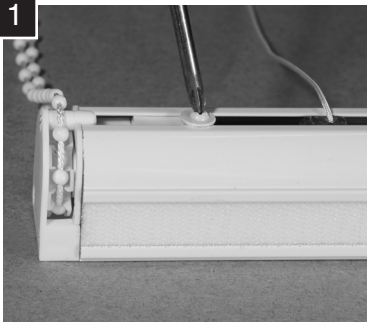
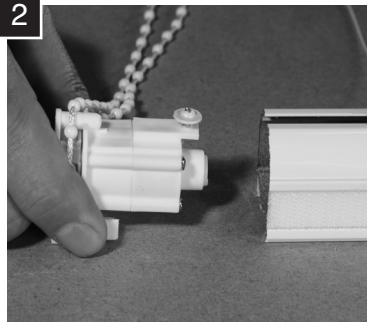


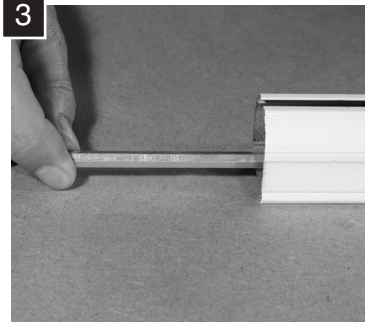
HOW TO SHORTEN YOUR HEADRAIL



1
Loosen the small screw on the underside of the headrail holding the chain drive unit.



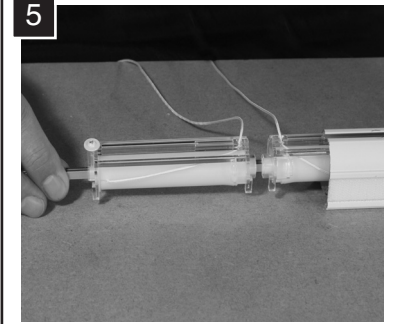
2
Withdraw the chain drive assembly.



3
Withdraw the control rod.

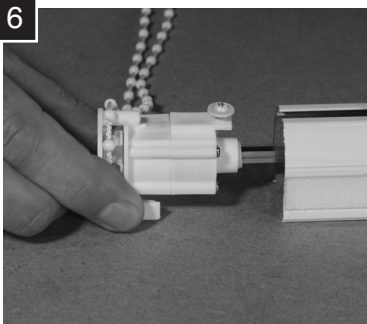


4
The headrail can now be shortened to the required length (1 cm less than finished blind width to allow for the chain drive unit). Cut the control rod 4cm shorter than the headrail size.

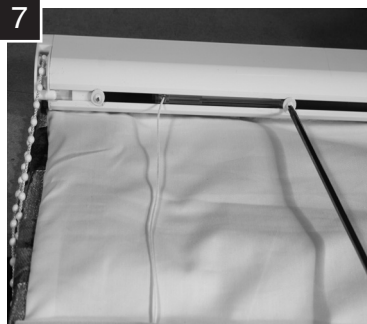


5
Re-assemble the components ensuring that the cords are fully extended before inserting the control rod.

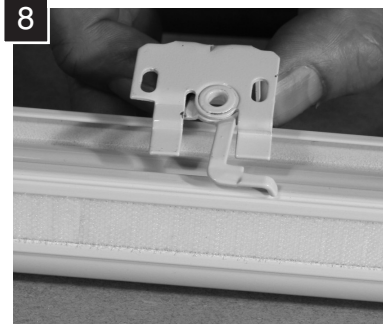
FITTING AND FIXING YOUR HEADRAIL



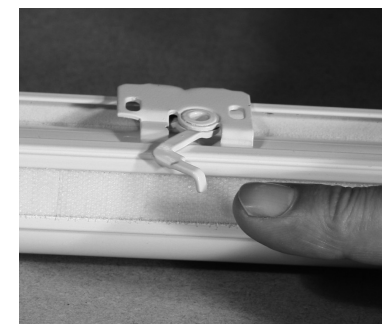
6
Re-fit chain drive unit.



7
Place the blind face down and place the rail onto the velcro heading on your blind. Adjust the cord spools by loosening the small securing screws, slide into position and re-tighten the screws. Thread cords through guides and secure to blind.



8
The brackets supplied are suitable for both face and top fixing. Once located on the rail the brackets must be secured by closing the small cranked lever on each bracket.



PLEASE NOTE:

- We recommend that all assemblies are rigged, tested and adjusted as necessary before delivering to site.
- Alternative chain sizes and colours available please see our brochure for details.
- Maximum capacity 4kg, optional Geared Control Unit available up to 7kg.
- Jones Interiors will not accept responsibility for any system failures caused by exceeding these weight limits.